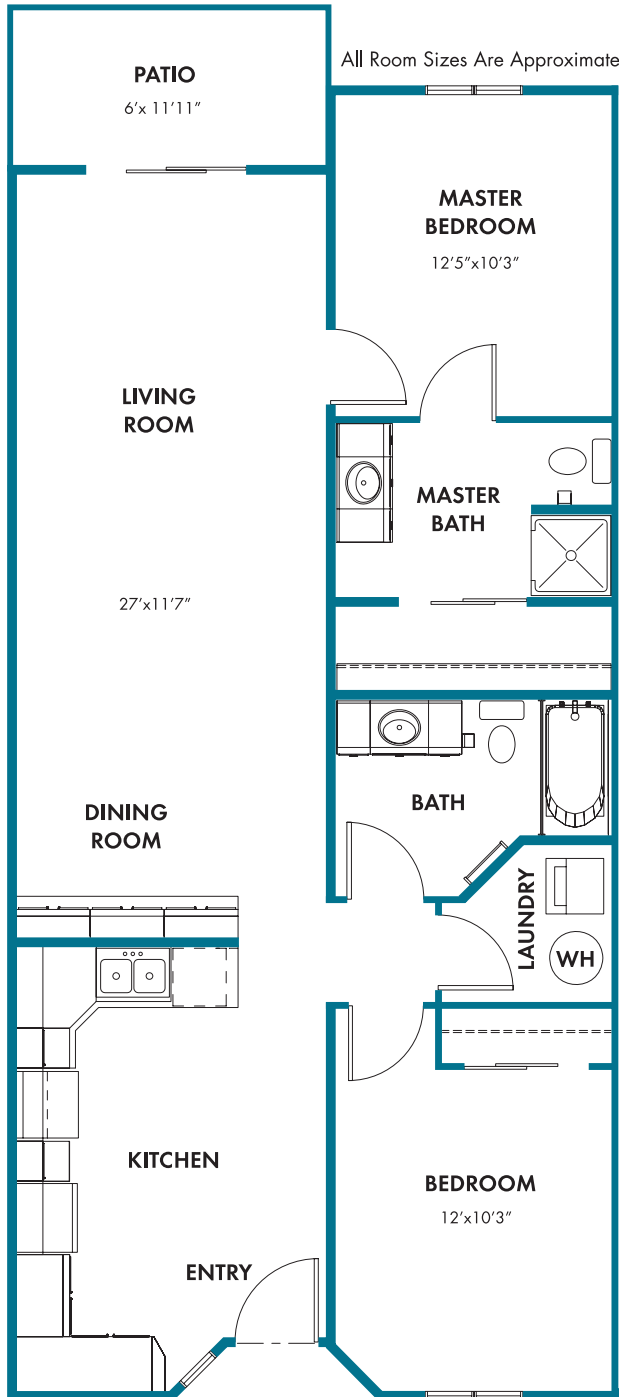


DORSEY PLACE FLOORPLANS

THE METROPOLITAN

Approximately 1,100 Sq. Ft.



STANDARD FEATURES

Two Tone Paint Throughout: Beige walls with white trim

Raised Panel Interior Doors

Brushed Nickel Finish on door handles, faucets, hinges and lighting

All Window Coverings Included: 2" Faux Wood blinds and Vertical blinds at slider doors

Pre-wired for Cable, Telephone and High Speed Internet

Designer Lighting Package includes Pendant hanging light in dining area, Recessed lighting in kitchen, Brushed nickel light bars in baths and Ceiling fans with light kits in all bedrooms, den and living room

Upgraded Designer Carpet and Pad throughout
9 Foot Ceilings

Spacious Terrace included in every home

Security System Pre wired

KITCHEN & BATHS:

Clean Steel GE Appliance Package includes Refrigerator with water and ice dispenser, Dishwasher, Ceramic Top Range and Microwave Oven with Washer and Dryer

Raised Panel Cabinets in either spice or natural, staggered tops in kitchen for that custom look. Breakfast bar has storage underneath.

Granite Counter tops in kitchen, breakfast bar and baths, with under-mount sinks

Designer Plumbing Fixtures including a single handle sprayer in kitchen and lever handles in baths

20"x 20" Porcelain Tile in kitchen, baths and Utility Room

Guest Bathroom: Glass Bypass Door in tub / shower

See Reverse Side for The Prestige Floorplan

480.967.2110|PH

480.967.2118|FX

DORSEYPLACECONDOS.COM

1275 E. University Drive, Tempe, Arizona 85281

Debbie Bannister - Designated Broker

GEIS Realty, LLC

Copyright © 2007, Dorsey Place



No offer for sale may be made and no offer to purchase may be accepted prior to issuance of the final Arizona Department of Real Estate Subdivision Public Report. Prices, Incentives and Standard features subject to change without prior notice.